

**Tracing Water** is a collaborative artwork of Sue Peckley, Kiyomi Ueda, and Taro Dozaki University students, who work closely with the Aramachi Shinden community. Historically this community suffered shortage of water for centuries until the Kawarishi Dam was built in 1950. Our work grows on the local stories about water that circulate orally in the community.

It comprises outdoor site works and a spatial structure for a group exhibition at the Kinzoku Museum. The outdoor artworks take the form of many giant blue woven water molecules, clustered and suspended in six locations in and around the Aramachi Shinden. The locations are on a terrace and a park nearby and looking onto the Kawarishi Dam, a shrine, playground and pond in the Aramachi Shinden, and a nearby forest surrounded by rice fields. The sites trace memories of a river from the mountain to the edge of the Shinano River.

The museum component is a 10 ft sq spatial construction incorporating mirrors, shelves, stones and a rotating "water molecule" for the exhibition - the Hagihi Shiki in 2018, at the Echigo National Salyouga Museum of Contemporary Art - Kinzoku. The stones on the shelves hold memories of water each collected from the Minamigawa River which flows from the mountain through the Aramachi Shinden to the Shinano River.

**site 1 mountain**  
 Both the land of this land were used for the construction of the dam, and the landscape topography was generated as a by-product of the dam construction.

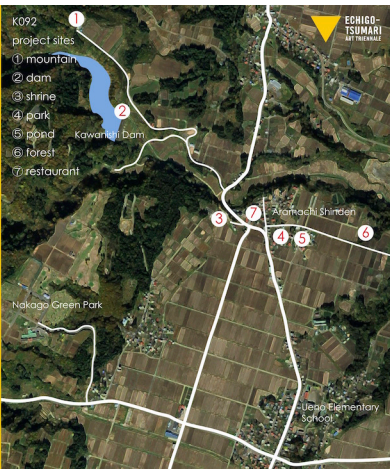
**site 2 dam**  
 The Kawarishi Dam was completed in 1950. In 1978, Sumo wrestler Habisaka Hideozumi was drafted and "Agitate" (through the land) ceremony was conducted on the dam.

**site 3 shrine**  
 The shrine (site 3) is located on the branch of the river which flows from the dam. The branch flows through a green pipe suspended over the river.

**site 4 park**  
 The land used to be a pond providing water for rice fields of this area. After completion of the dam and land improvement, the pond turned into a park and the playground.

**site 5 pond**  
 During the Aramachi Shinden land improvement work, the local people (young) moved to this area in the neighborhood of school. People often use this pond.

**site 6 forest**  
 This area used to be a cemetery in the forest. At this point the river flows down for rice fields, goes down the steep edge of the river terrace and returns to its natural flow.



- K092  
 project sites  
 ① mountain  
 ② dam  
 ③ shrine  
 ④ park  
 ⑤ pond  
 ⑥ forest  
 ⑦ restaurant

ECHIGO-TSUMARI  
 EARTHQUAKE  
 MEMORIAL MUSEUM